

# GO RHINO®

## INSTALLATION INSTRUCTIONS

### PART NO.

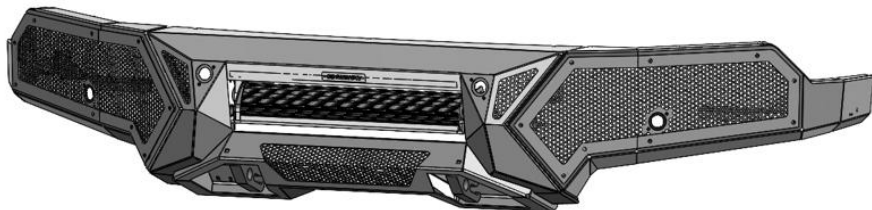
- 34186T
- 341861T

### PRODUCT DESCRIPTION:

- Element Front Bumper

### VEHICLE APPLICATION

- Chevy Silverado 1500
- GMC Sierra 1500



### PRODUCT SAFETY & LEGAL DISCLAIMER

- **IMPORTANT READ ALL INSTRUCTIONS CAREFULLY BEFORE INSTALLING, FAILURE TO DO SO MAY CAUSE PERSONAL INJURY OR DAMAGE TO PRODUCT AND/OR PROPERTY.**
- **Review the product package and contents prior to beginning the installation.** Take care when opening the packaging and removing items. If a return is needed you will want to return the product in its original packaging if possible.
- This instruction guide is provided as a GENERAL installation guide, some vehicles vary dimensionally and may require additional steps.
- Test fit the product on the vehicle prior to any third party modifications and or finishing. The manufacturer and/or distributors do not accept responsibility for third party charges, labor and or third part replacement modifications. Some modifications may void the factory warranty.
- Exercise due-diligence when installing this product. The manufacturer and distributors of this product do not accept any responsibility for vehicle damage or personal injury resulting from the installation of this product. Careless installation and operation can result in serious injury or equipment damage.
- This product is for general off-road use. All liability for installation and use rests with the owner/operator.
- **INSTALLER:** Once installation is complete, please return this guide along with other documentation included in this product back to the consumer for future reference. The manufacturer/distributors of this product do not guarantee this particular version will be available at a later date.

© 2016 Go Rhino Products. All rights reserved

[www.gorhino.com](http://www.gorhino.com)

589 W. Apollo St., Brea, CA 92821

P: 888 427 4466



## INSTALLATION INSTRUCTIONS

### INJURY HAZARD

Please complete a shop and tool inspection prior to beginning the installation.

- Always make sure you have a clean, dry and well lit work area.
- Always remove jewelry, loose fitting clothing and wear protective gloves and eye protection.
- Always use extreme caution when jacking or raising a vehicle for work. Set the emergency brake and use tire/wheel blocks and jack stands. Refer to the vehicle manufacturer hand book. Utilize the vehicle manufacturers designated lifting points.
- Always use appropriate and adequate care in lifting parts during disassembly and installation. Seek help in lifting heavy or large items into place. Utilize jacks and or lifting devices when available.
- Always insure products are secure during disassembly and installation.
- Always wear eye protection and take steps to protect any exposed skin during the installations. Drilling, cutting and grinding plastic and metal may create flying particles that can cause injury.
- Always use extreme caution when drilling, cutting and or grinding on a vehicle. Thoroughly inspect the area to be drilled, on both sides of material, prior to modification and relocate any objects that may become damaged.
- Always assemble and tighten all fasteners per the installation instructions.
- Always route electrical cables carefully. Avoid moving parts, parts that may become hot and rough or sharp edges.
- Always insulate and protect all exposed wiring and electrical connections.

### MAINTENANCE AND CARE

- Always perform regular inspections and maintenance on mounts and related fasteners.
- Periodically check and tighten all fasteners.
- Stripped, fractured, or bent fasteners must be replaced.
- After washing the vehicle make sure to fully dry all surfaces.
- In areas with cold temperatures make sure to wash the product often to remove harmful materials used on road ways.
- Never use abrasive cleaners or polish compounds. Clean with a gentle soap and water. If you use wax use a non-abrasive automotive wax such as pure carnauba wax.

### WARNING

Some products have been designed to work together with factory rear sensor systems, factory forward facing sensor systems and factory air bags.

- Installation of some of these products may alter the factory sensor system performance.
- Factory sensors may read shackles or hooks protruding from the fairlead and or tow hooks.
- All sensor testing is completed by Go Rhino Products and or third party testing labs on modified vehicles.
- Sensor sensitivity, factory sensor housing, orientation, and operating conditions are all variables that will influence functionality of the sensors.
- Installation of some product may effect the factory air bag systems.
- Some products allow the use of third party products such as winches, shackles, hooks, etc. Follow the respective manufacturers operating instructions for use with our products.
- Make sure to fully understand the product, it's intended use and operation prior to use.
- Above all... be safe!



# INSTALLATION INSTRUCTIONS

## PARTS INCLUDED IN THIS LIST:

ITEM	QTY	PART	Size
1	1	CENTER FRONT BUMPER REPLACEMENT	
2	1	DRIVER WING WITH MESH & FRAME	
3	1	DRIVER MAIN BRACKET	
4	1	DRIVER AUXILIAR BRACKET	
5	1	PASSENGER WING WITH MESH & FRAME	
6	1	PASSENGER MAIN BRACKET	
7	1	PASSENGER AUXILIAR BRACKET	
ITEM	QTY	Hardware	
8	4	Carriage Bolt	1/2 x 1 1/4"
9	6	Hex Bolt	1/2 x 1 1/2"
10	18	Flat Washer	1/2"
11	12	Lock Washer	1/2"
12	12	Hex Nut	1/2"
13	1	Bolt Guide	1/2"
14	2	Vinyl Washers	
15	10	Flat Washer	3/8"
16	10	Lock Washer	3/8"
17	2	Hex Nut	3/8"
18	8	Hex Bolt	3/8 x 1"
19	2	Carriage Bolt	3/8 x 1 1/4"
20	5	Button Head Screws	1/4 x 3/4"
21	5	Hex Nut	1/4"
22	8	Flat Washer	1/4"
23	5	Lock Washer	1/4"
ITEM	QTY	Lightbar Hardware Kit	
1	2	3/4" OD Spacer	
2	2	Hex Bolt	M8x35MM
3	2	Lock Washer	M8

Go Rhino recommends you, the installer, read this installation instruction manual from front to back before installing the product. You may also [click here](#) to view an installation video or visit <http://www.gorhino.com/Installation-Videos>.

## TOOLS NEEDED FOR INSTALLATION:

- T15 Torx bit
- 10mm socket wrench
- 7mm socket wrench
- 10mm socket wrench
- 18mm socket wrench
- 15mm socket wrench
- 9/16 socket wrench

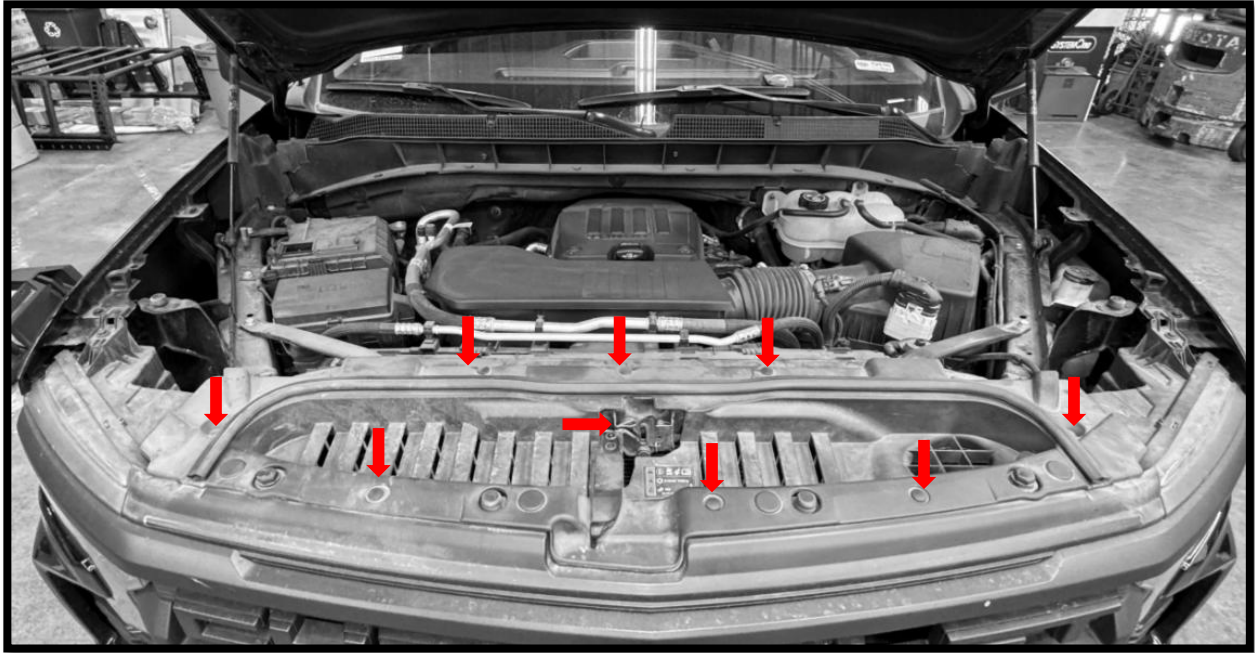
ESTIMATED TIME FOR INSTALLATION:

1.5-2 hrs

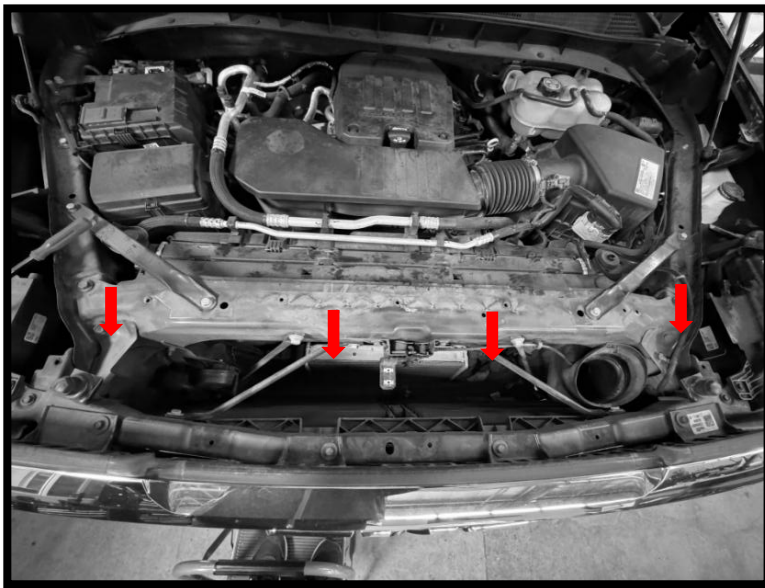
If you need installation service for your new product, call the authorized distributor from whom you purchased the product or an authorized installation service company which can be found by calling toll free 1-888-427-4466

# GO RHINO®

## INSTALLATION INSTRUCTIONS



1. Using a T15 Torx bit remove the two (2) screws in the hood latch handle to remove it.
2. Using a panel pry tool, remove the nine (9) push pins in the under-hood cowl to remove it.
3. Using a 10mm socket wrench, remove the four (4) bolts attaching the grill to the truck



# GO RHINO®

## INSTALLATION INSTRUCTIONS



4. Using a T15 Torx, remove the six (6) lowest forward most screws in each front inner fender. This step applies to Chevy and GMC models

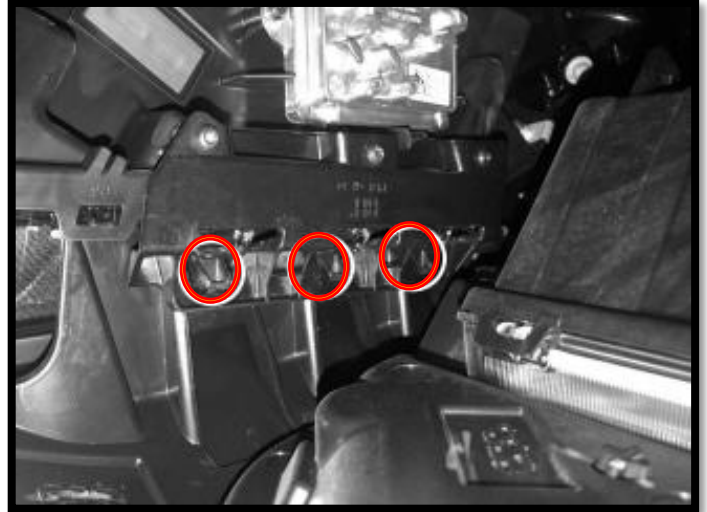
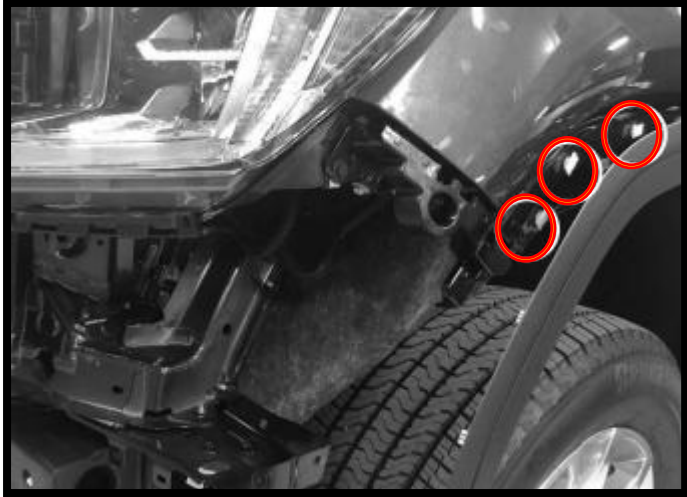


5. Using a plastic body panel pry tool, carefully pry outward on the plastic fender trim starting at the bottom front of the driver side and work upwards. Only remove as much of the fender trim as needed to get access to the one (1) screw attaching the valance to the fender. \* GMC Sierra only\*

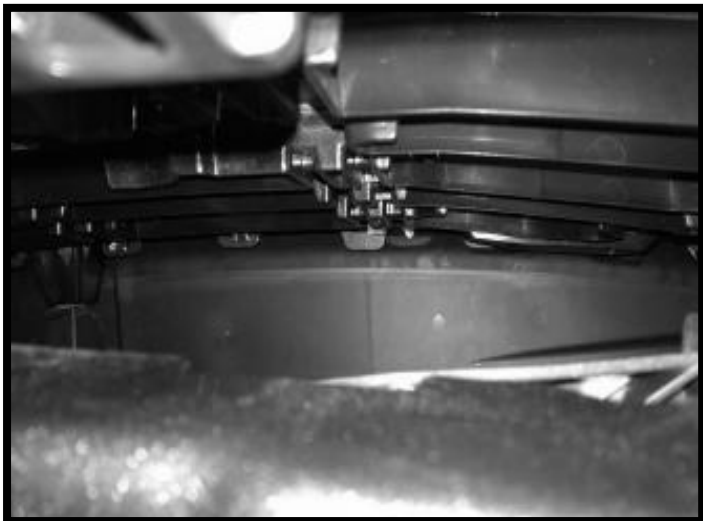
6. Using a 7mm socket wrench, remove the screw attaching the valance to the fender on the driver side. \* GMC Sierra only\*

# GO RHINO®

## INSTALLATION INSTRUCTIONS

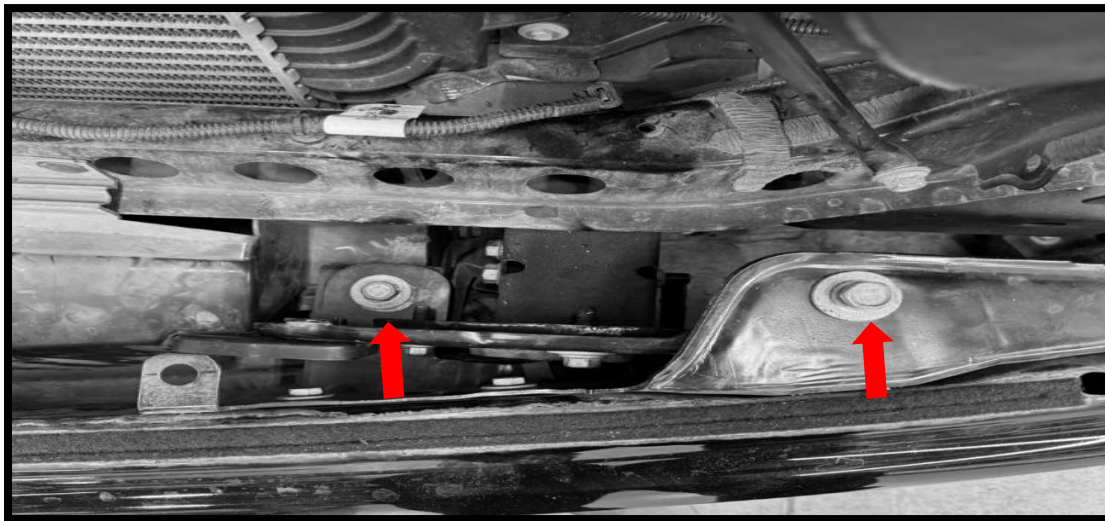
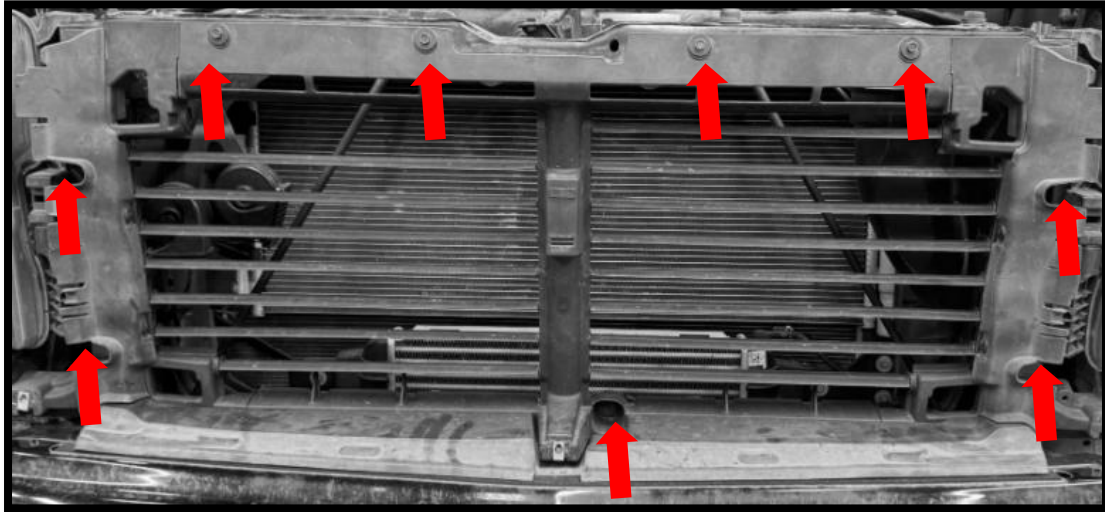


6. Using the plastic body panel pry tool, carefully remove the clips in the fender that were attaching the fender trim to the fender and reinstall them onto the backside of the fender trim on the driver side\*
7. Using a plastic body panel pry tool, depress the three (3) tabs under the headlight while pulling outward on the valance to release it from the driver side headlight.
8. Using the plastic body panel pry tool, release the five (5) clips behind the grille and remove the valance from the truck



# GO RHINO®

## INSTALLATION INSTRUCTIONS

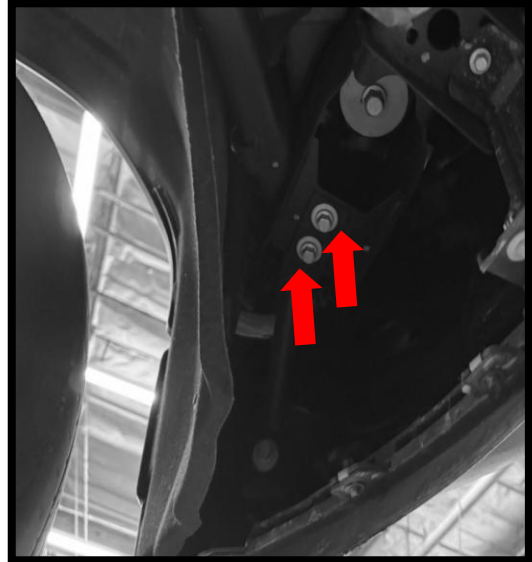
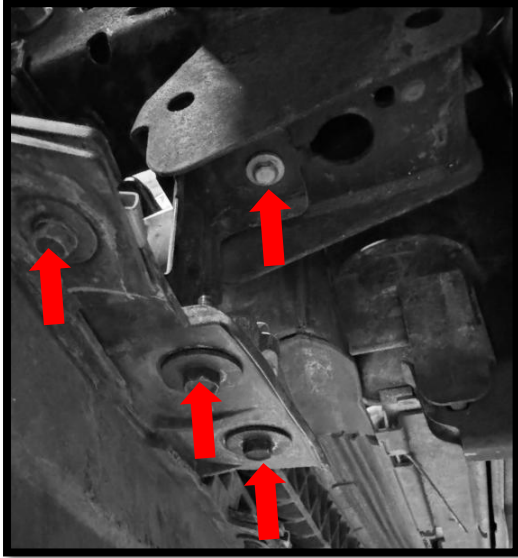


9. Using a 10mm socket wrench, remove the nine (9) screws along the perimeter of the upper louvers. Then, release the two (2) electrical connectors on the driver's side to remove the louvers. \*

10. With the upper louvers removed, using an 18mm socket wrench, remove the two (2) bolts between the frame rails behind the bumper (two per side)

# GO RHINO®

## INSTALLATION INSTRUCTIONS



11. Using a 10mm socket wrench, remove the four (4) screws per side holding the bumper supports to the frame and bumper. The bumper can now be removed from the vehicle.

12. Using an 18mm socket wrench, remove the two (2) bolts attaching the bumper reinforcement brackets to the bumper on the driver side.

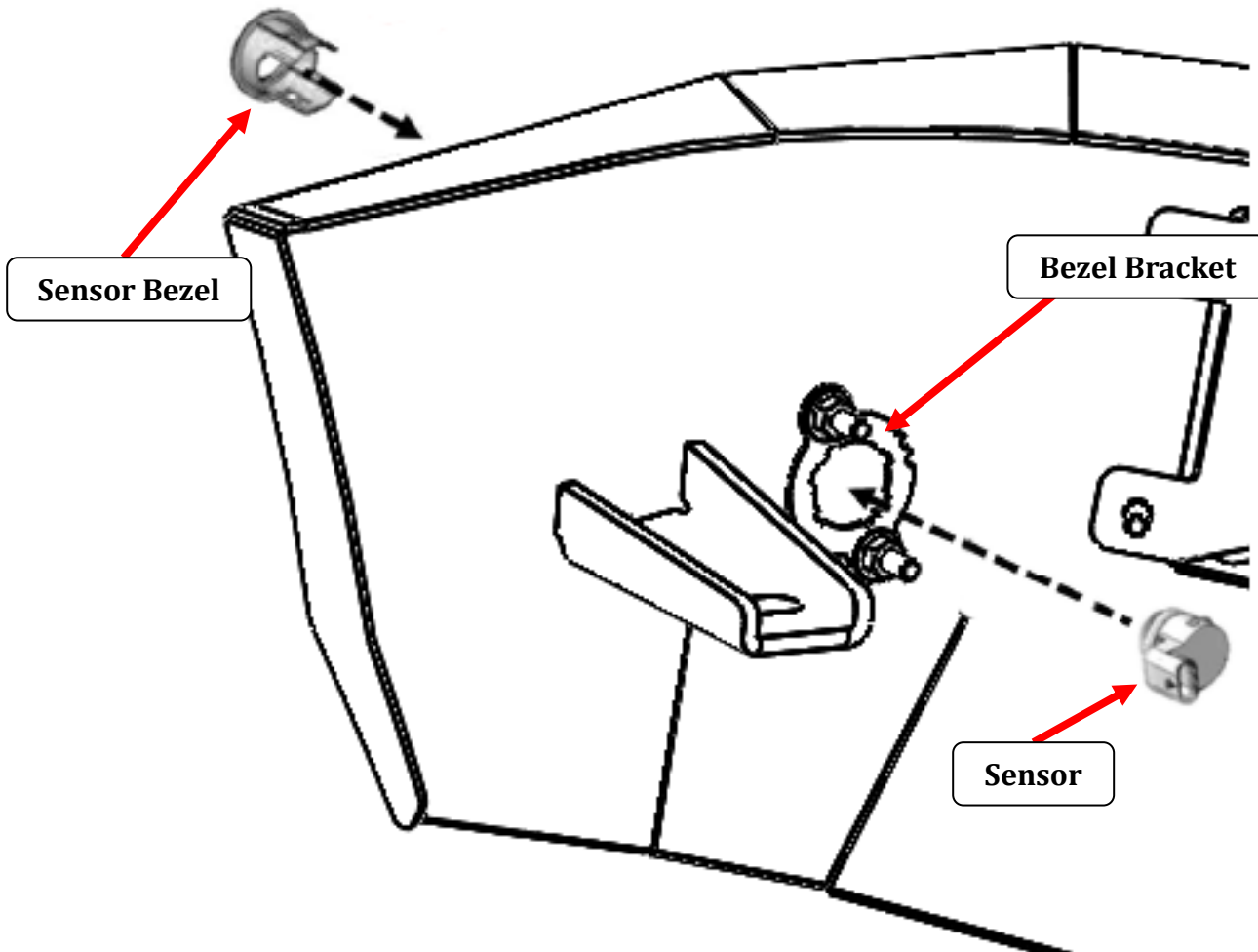
13. Unplug the sensor harness located on the passenger side of the vehicle

14. With assistance, remove the bumper assembly.



# GO RHINO®

## INSTALLATION INSTRUCTIONS



15. Remove the (4) plastic plugs from the sensor bezel plates that are preinstalled in the Element bumper.

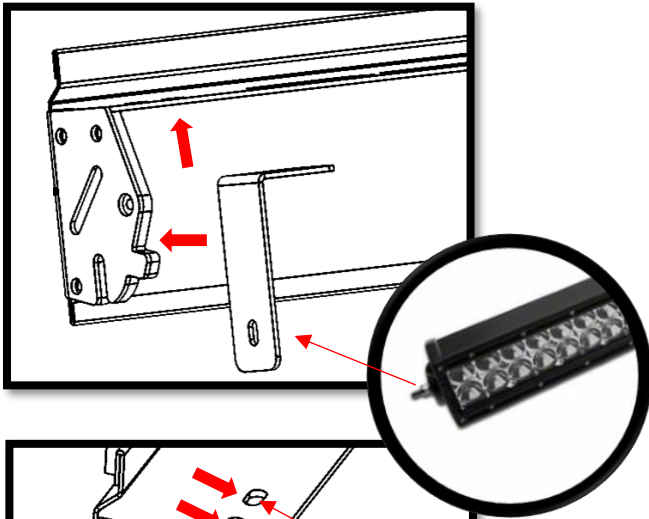
16. Aline the protrusions on each sensor bezel with the profile in the matching bezel plate, then from the front of the Element bumper push the bezel through the profile in the plate until the tabs around the base lock in position. **Note:** The Park Assist sensors and bezels have to be installed in the Element bumper replacement in the same position as removed from the OEM bumper.

17. Install the parking sensors in the sensor bezels and transfer the OEM bumper wiring harness to the Element bumper and re-connect to the parking sensors, (Fig 4).

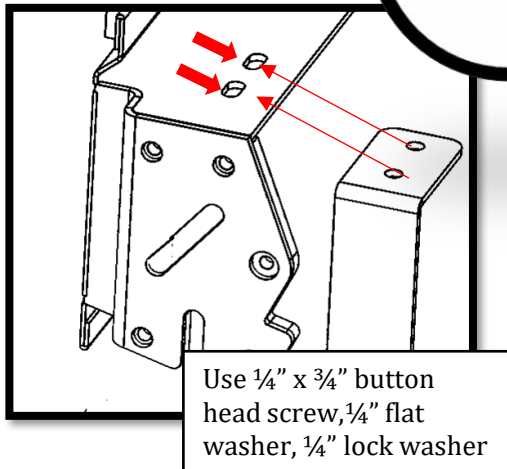
# GO RHINO®

## INSTALLATION INSTRUCTIONS

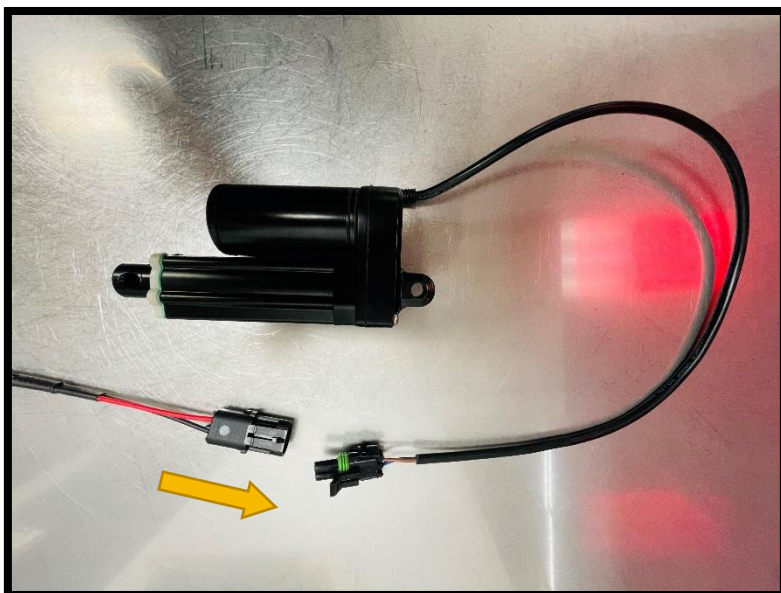
### Light Bar Installation (Only bumper w/actuator)



19. Install the LED bar onto the power bar bracket and have the light bar threads show as an exposed stud (both sides). You'll need to use the supplied hardware that came with your light bar. Secure each side and fasten it down. Be sure that the top side of the light bar is touching the top of the power bar or it will point downwards when in use. Repeat process for both sides.



20. Install reinforcement brace on the inner part of the power bar mount. Use 1/4" x 3/4" button head screw, 1/4" flat washer and 1/4" lock washer (two per side) to secure the reinforcement from the topside of the power bar mount. Repeat process for both sides.

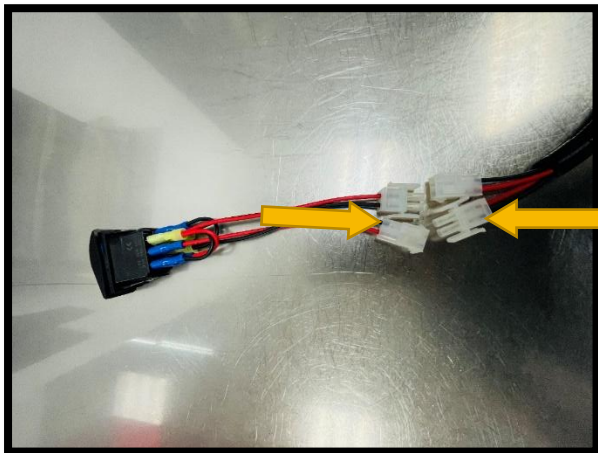
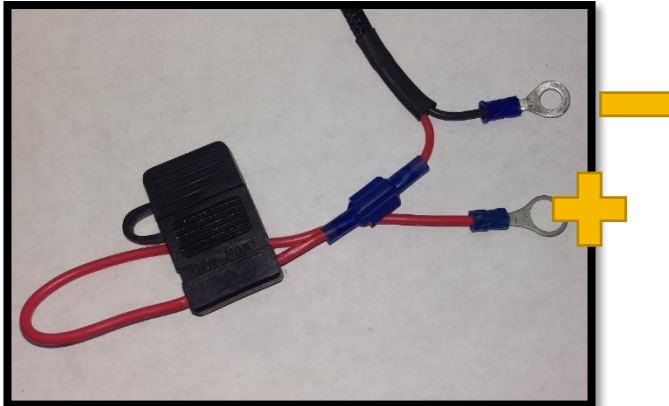


- Attach female plug to actuator

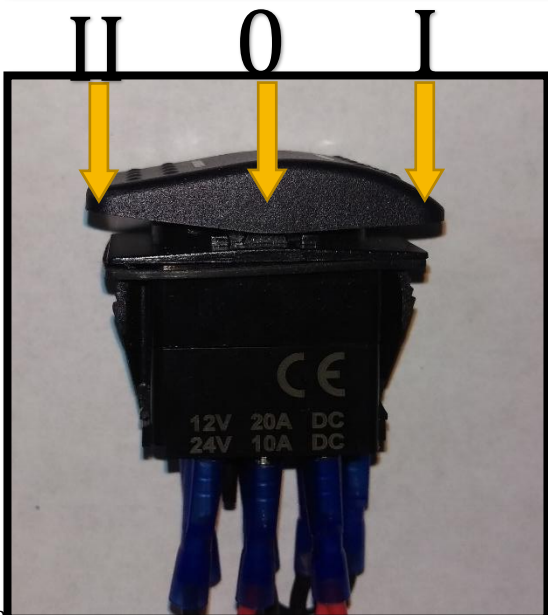
# GO RHINO®

## INSTALLATION INSTRUCTIONS

### Step-7



- Attach red terminal eyelet to battery positive. Secure black terminal eyelet to a suitable ground or battery negative.
- Beware of sharp edges, abrasive surfaces and heat sources when routing wires.
- Route harness to desired switch location.



3 position switch

0-Neutral

I-Bar up

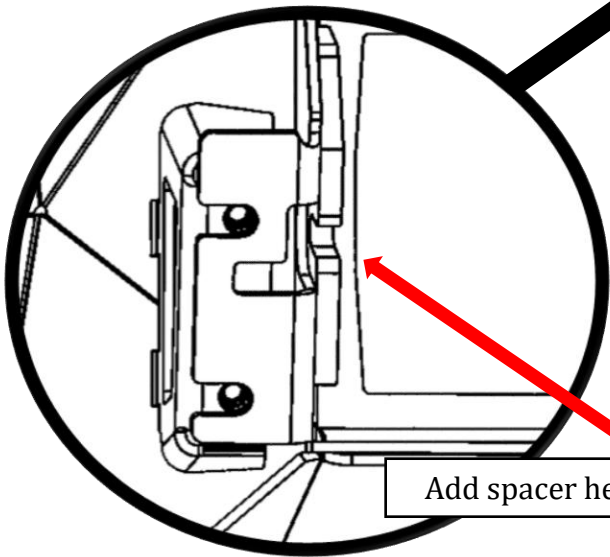
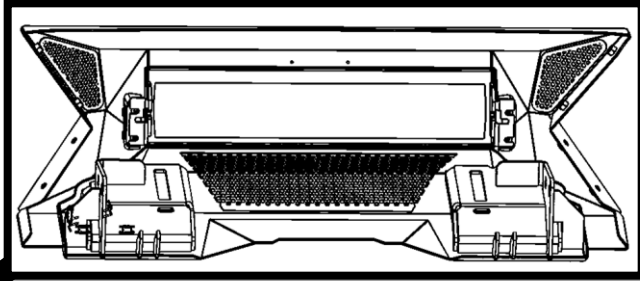
II-Bar down

- Switch may be left in position I or II, which will keep indicator LED on.
- In order to turn off indicator LED, move switch to neutral position.

# GO RHINO®

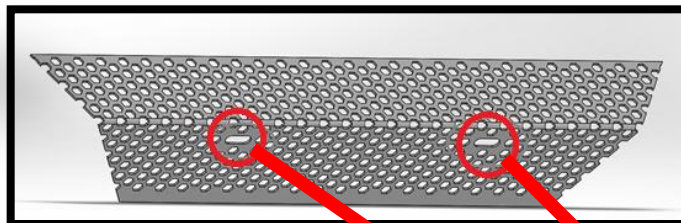
## INSTALLATION INSTRUCTIONS

BACKSIDE VIEW



Add spacer here if needed

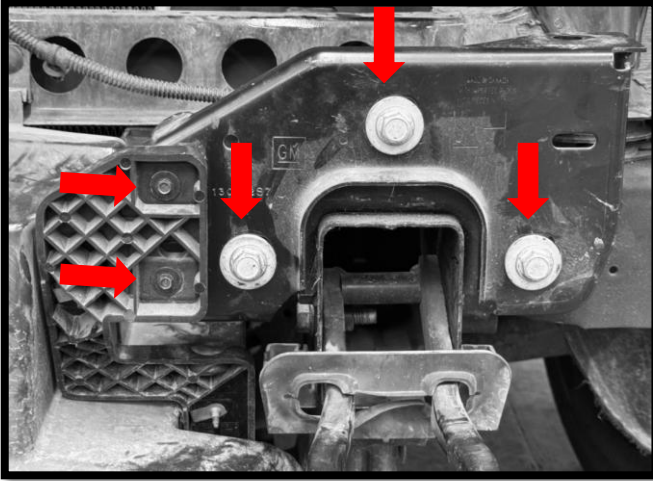
\*Depending on the light bar brand you decide to use, you may find that it will require spacers to fill in any voids. We supply  $\frac{3}{4}$ " OD plastic spacers. They are to be installed on the backside of the bumper, where the light bar mount is located.



\*If your state law requires a front license plate, attach the license plate to the holes in the face of the bumper shell, using the supplied  $\frac{1}{4}$ " x  $\frac{3}{4}$ " button head bolts,  $\frac{1}{4}$ " washer,  $\frac{1}{4}$ " lock washer and  $\frac{1}{4}$ " nuts, and the license plate to the ( 2 ) elongated holes in lower mesh area.

# GO RHINO®

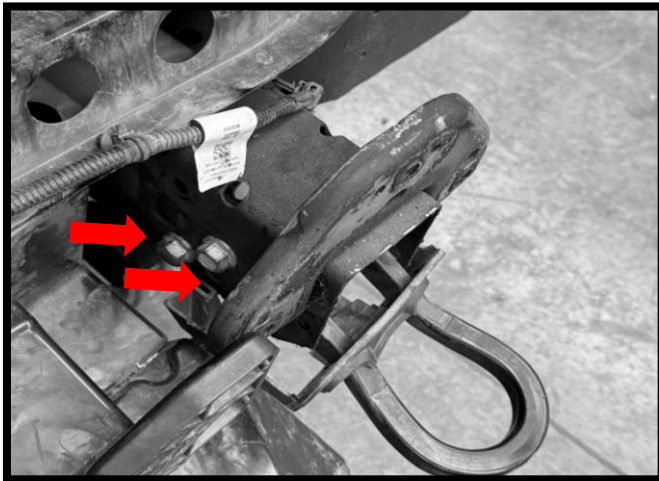
## INSTALLATION INSTRUCTIONS



18. Using a 15mm socket, remove the six (6) bolts from the frame horns and remove from the truck.

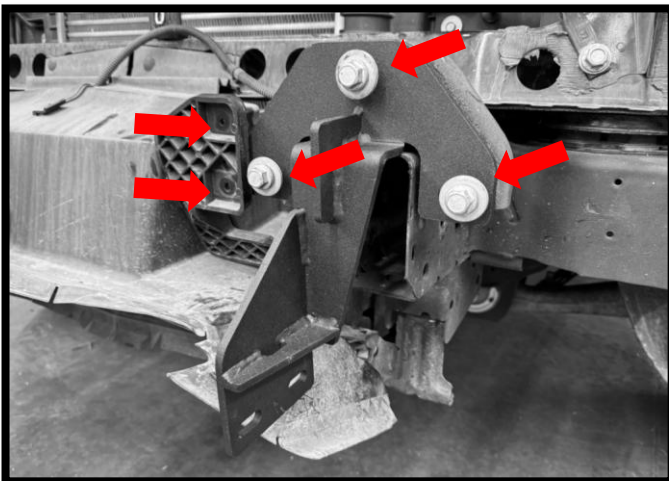
19. If vehicle is equipped with OEM tow hooks, remove them using an 18mm socket and 18mm open end wrench to remove the two (2) bolts per frame rail.

20. Using a 7mm socket wrench, remove the four (4) screws that hold the lower louver set to the intermediate bumper brackets.



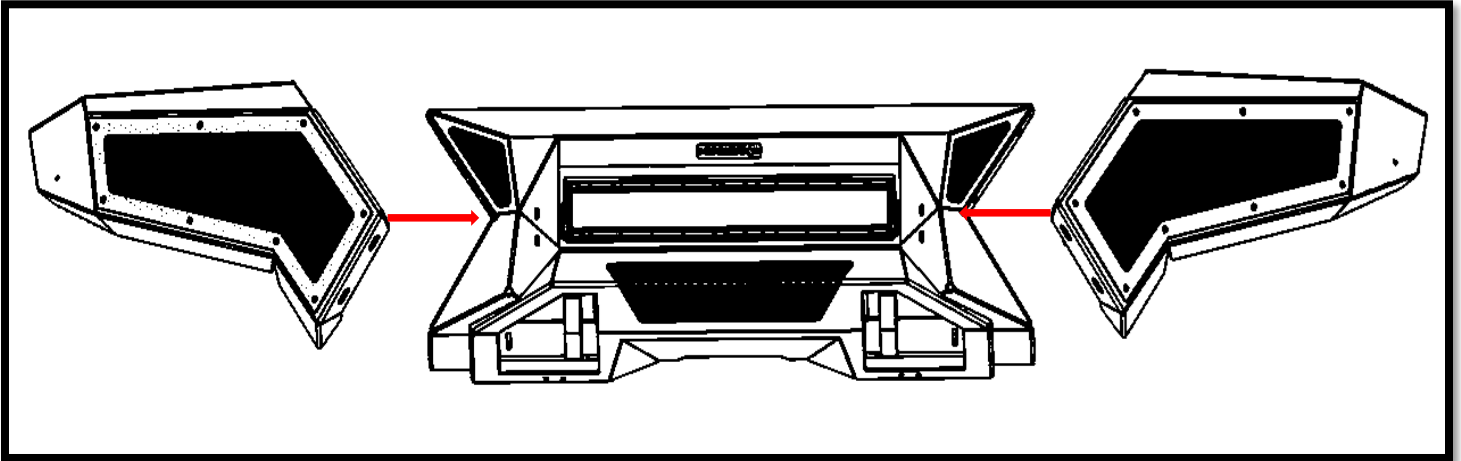
21. Using the OEM frame horn bolts, install the driver and passenger side brackets (3 per side)

22. Using the OEM screws, reinstall the lower louver to the Go Rhino bracket (2 per side)

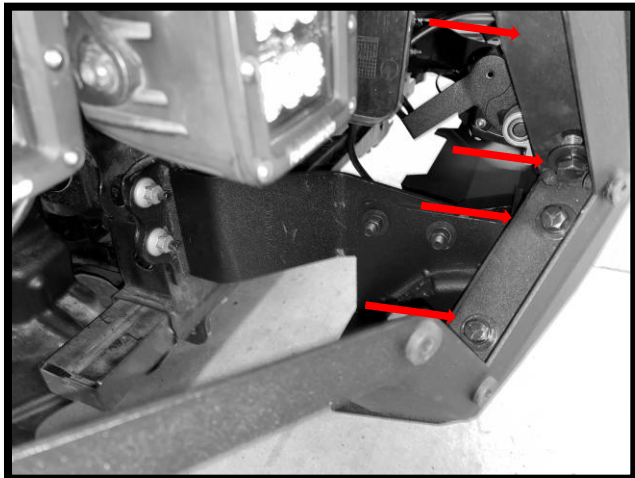


# GO RHINO®

## INSTALLATION INSTRUCTIONS



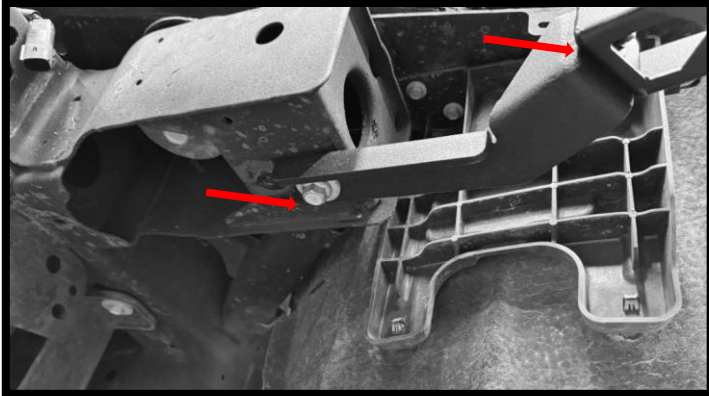
23. With assistance, position the center section of the Element bumper onto the frame brackets. Note that the frame horn brackets install on the inside area of the Element center section. You will need to use two (per side) 3/8x 1 1/4" carriage bolts to secure it. Introduce the carriage bolt from the inside of the Element bumper so that it protrudes as a stud. Fasten one 3/8" flat washer, one 3/8" lock washer, one 3/8" hex nut per carriage bolt. Leave finger tight for final adjustment. Repeat process for both sides. If vehicle is equipped with OEM tow hooks, remove them using an 18mm socket and 18mm open end wrench to remove the two (2) bolts per frame rail.



24. Install outer wings (without the mesh covers) onto the center section of the bumper. Exercise caution when installing each side to that you don't damage your paint. Each side with use four 3/8" hex bolts, four 3/8" lock washers, four 3/8" flat washers. This can be done with the mesh covers off as it will allow for greater access to the welded nuts on the center section.

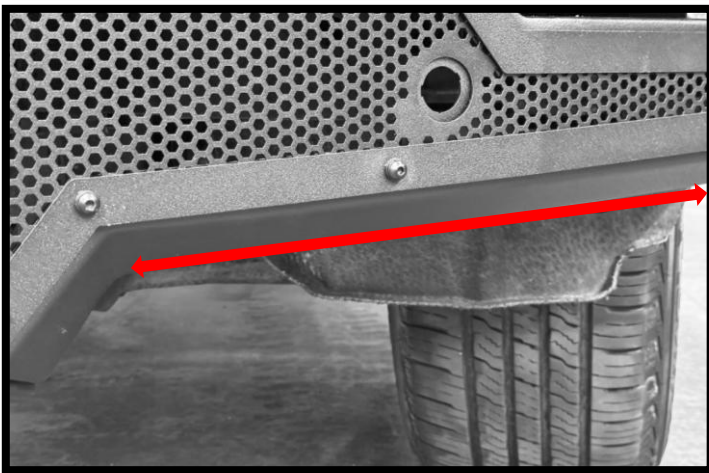
# GO RHINO®

## INSTALLATION INSTRUCTIONS



25. Using OEM bolts, use an 18mm socket wrench to install the auxiliary bracket to the frame of the vehicle. Repeat on both sides

26. Use one 3/8" x 1 hex bolt, two 3/8" flat washer, one 3/8" lock washer and one 3/8 hex nut to install the auxiliary bracket to the wing. Repeat on both sides.



27. Depending on your desired look, you can cut the OEM fender liner by following the Element bumper lines. With caution, use a cutting wheel or box cutter to cut the inner fender liner. If you prefer to cut more material, please refer to the images below. You can sand the edges, so they are not left sharp.

28. Reinstall the fascia, grill and upper radiator cover in the reverse order that was used to remove. Verify fitment and adjust to your desired final fitment.

# GO RHINO®

## INSTALLATION INSTRUCTIONS





# INSTALLATION INSTRUCTIONS

## LIMITED WARRANTY

Go Rhino warrants to Buyer that for a period of five (5) years from the date of shipment of the product(s) ("Warranty Period") for black finishes and chrome finishes, that such products will materially conform to the specifications set forth in Go Rhino's specifications in effect as of the date of shipment(s) and will be free from material defects in material workmanship.

Go Rhino warrants to Buyer that for the life of the product(s) from the date of shipment of the product(s) ("Warranty Period") for polished stainless steel finished products purchased after April 2004, that such products will materially conform to the specifications set forth in Go Rhino's specifications in effect as of the date of shipments and will be free from material defects in material workmanship.

Warranty claims must be accompanied with the original invoice and photos of the product. It is the customer's responsibility to clean regularly and protect finish with regular applications of a nonabrasive polish that is compatible with the product's finish.

This warranty covers the cost of the product only and does not include the cost of removal, installation, third party modifications or shipping of the product. In no event shall Go Rhino be liable to buyer or any third party for any damage or harm caused by the product or use thereof, regardless of weather such damages were foreseeable and whether or not Go Rhino has been advised of the possibility of such damages, not withstanding the failure of any agreed or other remedy of its essential purpose. This warranty is void if the product shows signs of alteration, misuse, mishandling, improper care, neglect, improper application and/or damage due to improper installation.

With respect to any such product(s) during the limited warranty period, Go Rhino shall, in its sole discretion, either: (i) provide a one-time repair or replacement of such products (or the defective part) or (ii) credit or refund the price of such products at the pro rata contract rate provided that, if Go Rhino so requests, Buyer shall, at Go Rhino's expense, return such product(s) to Go Rhino. The remedies shall be the Buyer's sole and exclusive remedy and Go Rhino's entire liability for any breach of the limited warrant(ies).

Go Rhino disclaims all other warranties except to the extent that any such warranty cannot be validly disclaimed under applicable law.

### Finish Limited Warranty:

Limited lifetime on stainless steel products (after April 2004)  
5 year warranty on black powder coat products  
5 year warranty on chrome products  
This warranty does not cover exposed welds

Finish warranty covers peeling, flaking, or cracking. Washing all finishes regularly with car wash soap and rinsing well with water is the best method for maintaining the finish on your products. You must also protect the finish with nonabrasive automotive wax on a regular basis. The use of any compound which contains abrasives becomes a self-defeating exercise as the compound scratches the finish and opens it to corrosion. The use of harsh chemicals used to remove bugs and tar may also cause the finish to fail and should be avoided.

If you are unsatisfied with your purchase please contact the establishment you purchased the product from.

If you need to place a warranty claim or need assistance, the Go Rhino customer service team will answer any questions you may have. Please contact the Go Rhino customer service team at 1-888-427-4466 during normal business hours Monday thru Friday 7 am to 5 pm PST. You may also email [warranty@gorhino.com](mailto:warranty@gorhino.com). In order to better serve you please provide a copy of the original invoice / receipt, a photo of the issue you are experiencing and a photo of the vehicle the product is installed on.

All warranty returns must have an approved RGA number. The RGA number must be clearly marked on the exterior of the return package. All approved warranty returns must be shipped to Go Rhino Products, 1002 Carriers Drive, Laredo, Texas 78045.

## PRODUCT REGISTRATION

Please remember to register your new purchase. You may register your product at [www.gorhino.com](http://www.gorhino.com). Registering your product may help speed any future warranty or customer service inquiries.

**Thank you again for purchasing from Go Rhino Products**

Please take a few minutes to view additional products for your vehicle and more at [GORRHINO.com](http://GORRHINO.com)  
These installation instructions are available on the Go Rhino web site along with installation videos for many of our products.

[www.gorhino.com](http://www.gorhino.com)

[www.bigcountryauto.com](http://www.bigcountryauto.com)

[www.gorhinopd.com](http://www.gorhinopd.com)